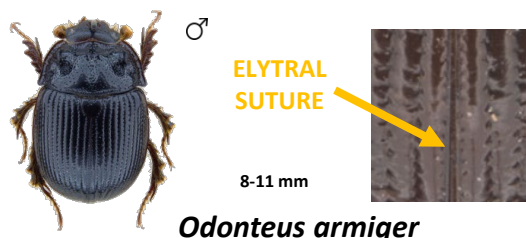


# British Scarabs Guide to Geotrupidae (Dor beetles)

## Elytral suture with clear ridge, small size

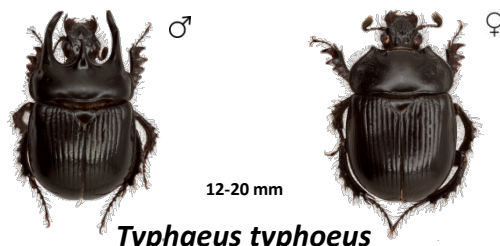


*Odonteus armiger*

J F M A M J J A S O N D

Underside not metallic. Males with backward facing horn. Feeds on underground fungi. Often found on summer evenings, attracted to light. Grass and heathland habitats, usually on calcareous soils.  
Distribution: South of a line from Lincolnshire to Bristol. **UNCOMMON**

## Forward pointing horns on pronotum

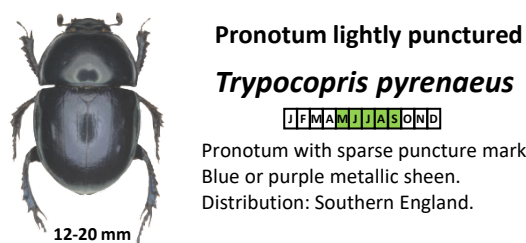


*Typhaeus typhoeus*

J F M A M J J A S O N D

Males with two long horns and smaller central horn on pronotum. Female with small points on pronotum. Underside of abdomen is all black not metallic. Mostly seen in spring and autumn.  
Distribution: England and Wales, scarce in Scotland.

## Striae faint or absent; basal margin of pronotum with incomplete border

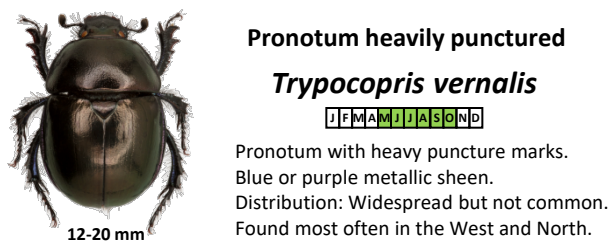


**Pronotum heavily punctured**

*Trypocopris vernalis*

J F M A M J J A S O N D

Pronotum with heavy puncture marks. Blue or purple metallic sheen.  
Distribution: Widespread but not common. Found most often in the West and North.



## Striae obvious; basal margin of pronotum with complete border

### Nine striae



*Geotrupes mutator*

J F M A M J J A S O N D

Nine striae between suture and shoulder running the length of each elytron. Other similar species have seven.  
Distribution: South of a line from Lincolnshire to Bristol. **UNCOMMON**

### Seven striae and single complete ridge on hind tibia



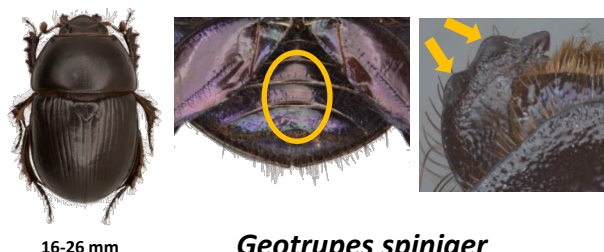
*Anoplotrupes stercorosus*

J F M A M J J A S O N D

Rounded body shape. Striae less well defined than *Geotrupes* which have two ridges on hind tibiae. Elytra with a crinkly appearance.  
Distribution: Widespread, found most often in woodlands in the West and North.

### Seven striae

#### Centre of abdomen bare or with sparse hairs



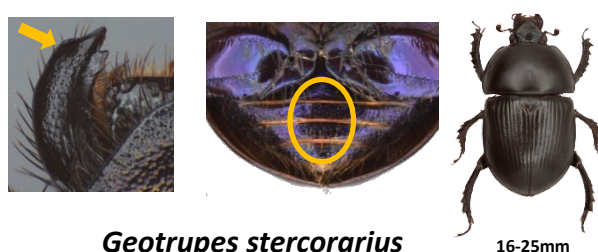
*Geotrupes spiniger*

J F M A M J J A S O N D

Dull. Central sections of the abdominal segments on the underside are bare or with very sparse hairs. Outer edge of mandibles wavy.  
Distribution: Widespread in the UK.

### Seven striae

#### Centre of abdomen evenly covered with hairs



*Geotrupes stercorarius*

J F M A M J J A S O N D

Shiny. Central sections of the abdominal segments on the underside are uniformly covered with hairs. Outer edge of mandibles rounded.  
Distribution: Widespread in the UK.



Many thanks to OUMNH for use of images  
<https://www.oumnh.ox.ac.uk>



[www.britishscarabs.org](http://www.britishscarabs.org)