

# British Scarabs Guide to *Onthophagus* Dung Beetles

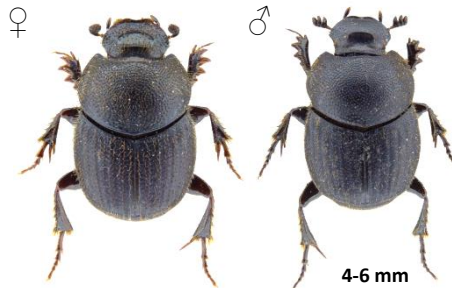
## Dull Black



*taurus*

Presumed extinct

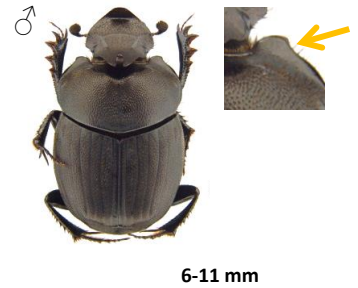
Front edge of pronotum rounded, no pale hairs on centre of elytra.  
Distribution: Last record in 19<sup>th</sup> century.



*joannae*

J F M A M J J A S O N D

Front edge of pronotum rounded, elytra with uniform pale hairs. Prefers chalky & sandy soils.  
Distribution: South England, less common Central England & Wales.



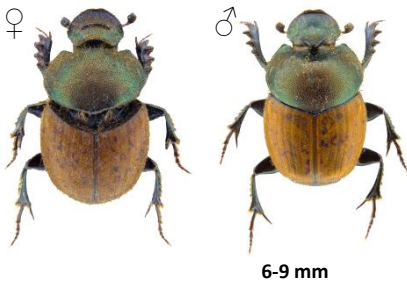
*verticornis (nutans)*

Presumed extinct

Front edge of pronotum indented.  
Distribution: Last record 1926 from Dorset.



## Bicoloured, front edge of pronotum indented



*coenobita*

J F M A M J J A S O N D

Pronotum metallic, elytra pattern sparse.  
Distribution: South to Central England & Wales; absent North England & Scotland.



*similis*

J F M A M J J A S O N D

♂ horn not angled with narrow base. Prefers light soils.  
Distribution: South to Central England & Wales; scarce further north.



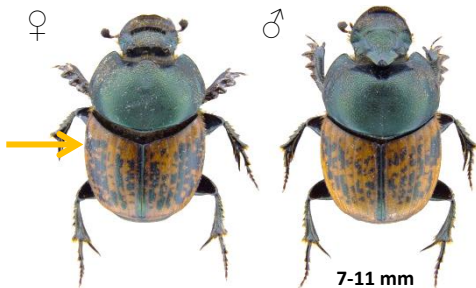
*fracticornis*

J F M A M J J A S O N D

♂ horn angled with broad base.  
Distribution: Glamorgan & Somerset.  
**Rare**



## Bicoloured, front edge of pronotum rounded



*medius*

J F M A M J J A S O N D

Pronotum metallic green, elytra markings do not extend to base. Alluvial soils.  
Distribution: South of a line London to Bristol.

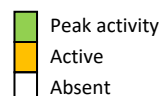


*nuchicornis*

J F M A M J J A S O N D

Pronotum black, elytra markings extend to base. Sandy soils, most often sand dunes.  
Distribution: Formerly widespread. Recent records from Devon, Suffolk, Glamorgan & Gwynedd. **Rare**

Many thanks to OUMNH for use of images  
<https://www.oumnh.ox.ac.uk>



[www.britishscarabs.org](http://www.britishscarabs.org)